



Briefing on DART Services for World Cup 2026

Committee-of-the-Whole
Development Subcommittee

November 12, 2024

Anthony Fuller
Vice President
Commuter Rail Services

Jing Xu
Assistant Vice President
Service Planning & Scheduling



Overview

- Background of FIFA World Cup 2026
- Dallas-Fort Worth's Role in World Cup 2026
- DART Services to World Cup 2026 Events
- Regional Coordination
- National Working Group

FIFA World Cup 2026

- FIFA World Cup 2026 is the quadrennial international men's soccer tournament featuring 48 teams that will take place in summer 2026
- Jointly hosted by 16 cities in 3 North American countries



FIFA WORLD CUP™ 2026 HOST CITIES		
		
USA		
ATLANTA		
BOSTON		
DALLAS		
HOUSTON		
KANSAS CITY		
LOS ANGELES		
CANADA		
TORONTO		
VANCOUVER		
MEXICO		
GUADALAJARA		
MEXICO CITY		
MONTERREY		

DFW Role

- Dallas will play a significant role during the FIFA World Cup 2026
 - Nine matches including one semi-final at AT&T Stadium (Dallas Stadium)
 - Various fan festival events at Fair Park
 - International Broadcasting Center at Kay Bailey Hutchison Convention Center (pending)
- Estimated 30,000-40,000 fans from all over the world will converge on North Texas for the 2026 FIFA World Cup



DART's Role

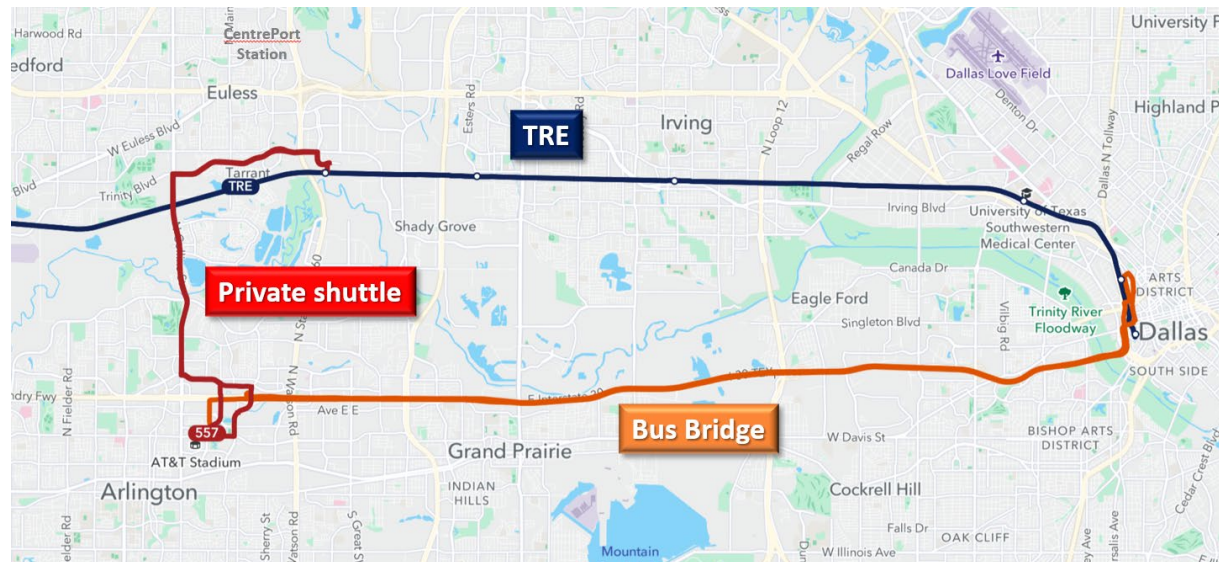
- DART welcomes this once-in-a-generation mega event to the Dallas region
- DART supports the success of this regionally significant event in collaboration with multiple stakeholders and agencies in the metropolitan area
- We will brief the Board on quarterly basis on the progress of event planning and execution, and support the event according to approach and available resource approved by the DART Board
- All costs related to extra services, administration, and fare revenue loss will be reimbursed by North Central Council of Governments (NCTCOG)



Service Concept

Arlington Events

- TRE: operate at peak period frequencies and the maximum car lengths, with last-mile connection to the AT&T Stadium via private shuttle paid by NCTCOG
- Bus Bridge: Up to 50 DART vehicles via IH-30 between Victory Station and the designated bus staging area near AT&T Stadium



Enhanced TRE Service

OPERATING TRAINS

- TRE staff confirmed that the current trains in operation will be the ones used for the World Cup
- Each coach/cab car can carry about 135-155 seated and 100-200 standing passengers
- The car types are not standardized, yielding varying capacities for individual cars

CAR SETS

- 4 and 6 car sets will be used if possible (might require external resources)
- Crush load is about 1,250 people for a train with a set of 4 cars
- A train with a set of 6 cars can carry close to 2,400 people



Enhanced TRE Service

HANDLING CUSTOMERS

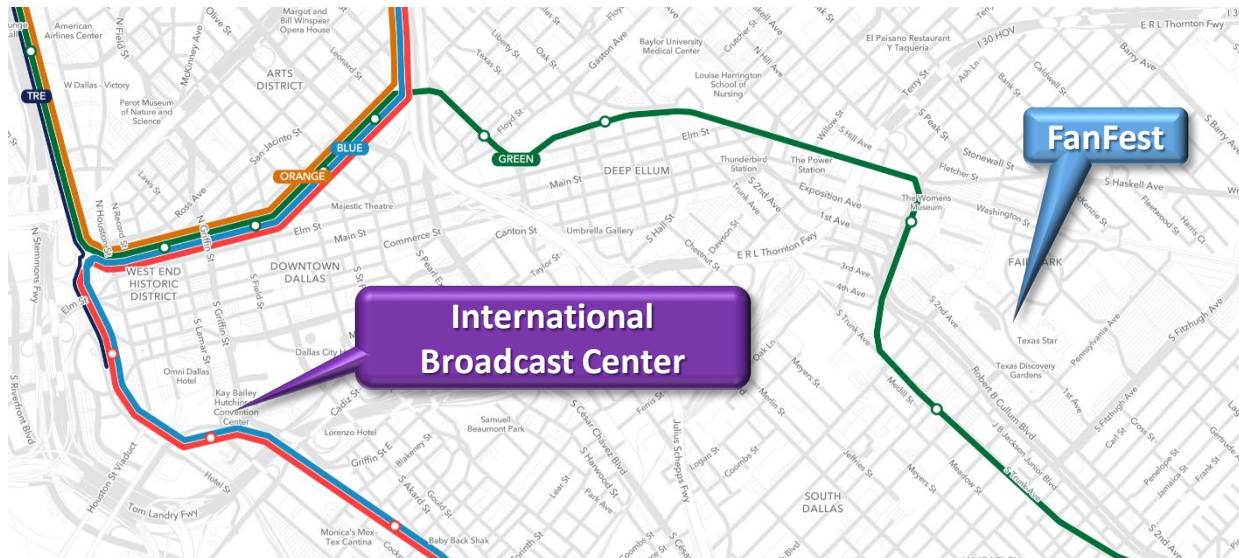
- Possible reservation system for booking TRE trips for games
- Regular riders would be factored into any decisions about reservations to ensure their travel needs will be met
- Boarding logistics should factor that regular commuters have more time sensitivity associated with their trips
- Work remains on handling fare payments



Service Concept

Dallas Events

- FanFest: Fair Park events served by existing DART light rail, bus, and GoLink
- International Broadcast Center: Kay Bailey Hutchison Convention Center (pending) served by existing DART light rail and bus
- Service levels will be determined by anticipated attendance at Dallas venues, more information coming later



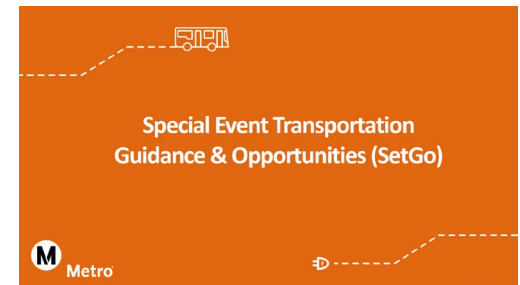
Regional Coordination

- Monthly meeting led by North Central Texas Council of Governments (NCTCOG)
- Coordinate closely with NCTCOG, Dallas Sports Commission, FIFA World Cup, and related groups on the transportation planning and execution and related event communications and marketing
- Oct 17, 2024, Regional Transportation Council (RTC) approved Development of a Transportation Plan for FIFA 2026



National Working Group

- DART Service Planning, Operations, and Police staff have been participating in various national working groups, workshops and conferences, to exchange knowledge and learn from worldwide best practices in preparing and delivering public transportation for mega events
 - Crowd Management
 - Safety and Security
 - Mobility / transport management
 - Integrated Ticketing
 - Travel information / Wayfinding



Key Challenges

- **Core issue: no mass transit in event city**
- Numerous events over one-month period
- Finding available resources (facility, fleet, equipment, and personnel) to support very heavy customer demand
- Preserving regular service to DART communities and customers
- Managing TNC availability to support GoLink
- Ticketing/fare payment

Thank You!



DART.org