



# DALLAS AREA RAPID TRANSIT Strengthening Our Region, Together



## RIDERSHIP & SERVICE



DART provides light rail, commuter rail, paratransit, bus and GoLink across Irving.

Our services have evolved over time to better serve the city.

A major network redesign in 2022 was developed in collaboration with Irving and focused on expanding GoLink microtransit service to complement bus service changes that refocused service to major corridors and major employment destinations for better regional connectivity.

As of October 2025, DART operates:

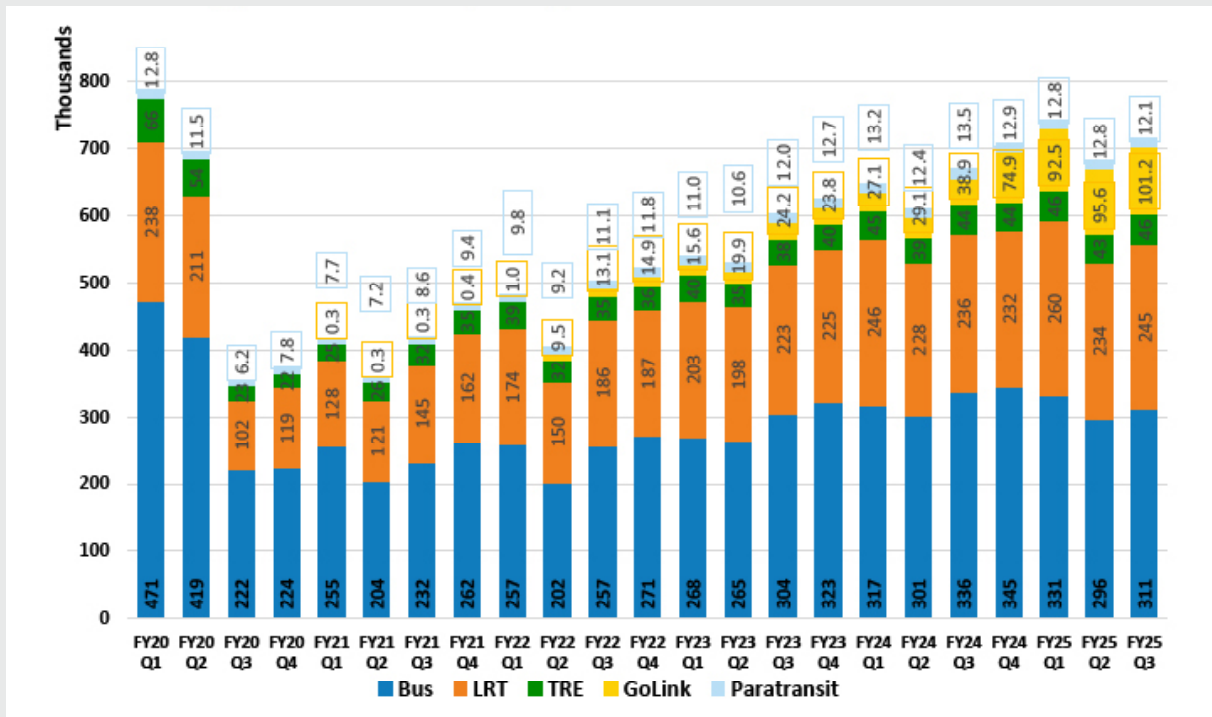
- o Orange Line light rail with 7 light rail stations (including DFW Airport Station).
- o TRE service with 2 stations, connecting to downtown Dallas, Fort Worth and DFW Airport.

- o GoLink Connections to the new Silver Line regional rail at Cypress Waters Station, enhancing access to the northern part of the service area.
- o 7 bus routes and one transit center (South Irving TC); note that 2 routes will be discontinued in February due to performance and alternative GoLink service.
- o 4 GoLink microtransit zones covering 88% of the city, contracted to Transdev, Uber and Lyft.
  - Irving GoLink zones were redesigned and expanded in June 2024.
  - GoLink ridership more than doubled after the change, and has surpassed 100,000 riders in FY25 Q3, on track for 400,000+ annually.
- o Region-wide paratransit service, connecting users to resources across city boundaries.

Irving is on track to exceed 2.7 million boardings with a good mix of rail, bus, GoLink, and paratransit.



# Irving Ridership by Mode



## Ridership Continued

Irving has seen year-over-year growth the last three years

71% of Irving's transit trips are to/from other cities based on NCTCOG's 2023 survey:

- o An Irving-only system will only address a quarter of the current residents and workforce needs.
- o People will have to find other means or will not be able to make their trip.
- o Workforce opportunities for Irving's large employment base will go down.
- o Stress will be placed on transit connections at Irving's border
- o More cars will be on already congested roads, adding to time in traffic for all.

Irving is served by five high-ridership bus routes, including (ridership 25Q3):

- o Route 25 (1,504 riders/weekday)
- o Route 227 (1,287 riders/weekday)
- o Route 229 (1,492 riders/weekday)
- o Route 230 (1,657 riders/weekday)
- o Route 231 (Operates entirely in Irving, 767 riders/weekday)

Irving currently has three of the top five GoLink zones in terms of ridership (25Q3):

- o North Central Irving (635 riders/weekday)
- o Cypress Waters (338 riders/weekday)
- o Passport Park (305 riders/weekday)







## DART REVENUE SHARING



DART has provided financial contributions since 1989 via multiple programs to all service area cities. For Irving:

- o 1989-2004 - LAP and LAP/CMS: \$47,720,602
- o 2023 PTI Funds: \$25,029,000
- o **TOTAL: \$72,749,603**

The DART Board also authorized a TIRZ Interlocal Agreement (ILA) with all cities in May 2025. Irving City Manager was a key participant in this idea to leverage future sales tax growth to support economic development.



## PLANNED CAPITAL & SERVICE INVESTMENTS



Discussions are underway as part of the Area Plan process to define and advance key opportunities, including a circulator in the Urban Center.

Capital investments in process:

- o New bus fleet in production
- o New LRV procurement to replace the oldest vehicles
- o New ticket vending machines and passenger information at all stations
- o New bus shelters in production
- o Five new TRE locomotives in production
- o TRE double-tracking investments near Medical District/IH 35E in progress to support speed and reliability

Future service improvements proposed under Phase 2, Tier 2 of the Bus Network Redesign include:

- o 15-minute service most of the day on the Orange Line
- o 15-minute service most of the day on bus Routes 229, 230
- o 30-minute service all day on all other Irving bus routes





## ECONOMIC DEVELOPMENT



The latest UNT Economic Research Group study reveals the significant economic benefits of development projects near DART light rail stations.

- o In the 25 years since UNT first began its studies, development within a quarter mile of DART's light rail stations has resulted in a \$18.1 billion direct impact
- o In 2022-2024, there were 37 development projects within one-quarter mile of DART light rail stations. These projects result in:
  - A \$1.0 billion direct impact and \$1.9 billion total economic impact
  - Creation of 5,295 jobs, and total employment creation of 9,422 jobs, adding up to \$724.2 million in labor income for workers in the region.
  - 10% and 12.6% rent premiums for residential and commercial properties, respectively.
- o These projects created \$51.5 million in construction-related state and local sales tax revenue, not including sales tax revenue paid to DART, and resulted in ongoing property tax and sales tax revenue to benefit local communities.

The DART TIRZ ILA provides all cities with another tool to leverage future sales tax increment to support economic development. This program was developed at the request of and in cooperation with service area cities, and ILAs have been provided for execution.

### TOD in Irving

#### o Overall:

- The City was very active in defining the alignment and stations on the Orange Line to direct and catalyze TOD and economic development in the Urban Center
- Downtown Irving is a key opportunity area
- Several TIF districts

#### o Projects:

- Development within half a mile of The Las Colinas Urban Center and the Irving Convention Center DART stations is **worth nearly \$2 billion** on the tax rolls
- The Irving Convention Center station serves the Irving Convention Center, the Westin Irving Convention Center hotel, multiple restaurants, and the Toyota Music Factory. The new 850,000 square foot Wells Fargo campus opened in October 2025.







## SECURITY & CRIME



DART has a comprehensive security strategy, including Crime Prevention Through Environmental Design (CPTED) assessments of all facilities, crime prevention messaging, and visible uniformed presence.

DART provides the following staff resources to support safety and security:

- 225 police officers
- 76 fare enforcement officers on the rail system
- 100 contracted, armed transit security officers on the rail system
- 4 police/Parkland social worker teams on the system to address vulnerable populations and connect them to services
- Clean teams at end-of-line stations

Overall violent crime (Assault, Homicide, Robbery, and Sex Crimes) is down 18% as of October 15, 2025, which is the last full reporting period.

A new Video Management System (VMS) and upcoming capital project will replace 7,700 cameras across the fleet and facilities to be monitored by a new consolidated dispatch and command center (CDCC).

Through October 15 this year, the DART Police Department has executed over 800 enforcement initiatives, working in conjunction with member cities.

These combined efforts have resulted in:

- 18% reduction in violent crime (Assault, Homicide, Robbery, and Sex Crimes)
- 61% increase in arrests and citations for criminal trespass (loitering)
- 20% increase in fare evasion citations and arrests
- 26% decrease in property crimes

Irving's crime report from 1/1/25-10/15/25:

- 42 NIBRS Group A offenses and 63 arrests reported (stations, bus stops, vehicles) by DART PD.
- During the same reporting period, Irving PD reported 10,303 NIBRS Group A offenses.
- DART Group A offenses occurring in the Irving service area are 0.4% compared to Irving's Group A offenses.



## IRVING/DART MEETINGS



Since 2023, the following meetings have occurred with Irving leadership:

- o 4 meetings - Nov 2023-Jan 2025 with Mayor, City Manager and Board member.
- o 2 City Council briefings - Sept 2024 update and Feb 2025 to update council on Board efforts on governance and service
- o 6 city manager group meetings - *Sept 2024-July 2025*
- o 3 NCTCOG RTC Mediation meetings with Irving representative - *March 2025*
- o 3 NTC/NCTCOG mediation meetings with Irving city manager - *October 2025*
- o 8 TIRZ ILA development meetings with Irving city manager - *Feb-Sept 2025*
- o 3 Governance working group meetings with Irving city manager - *Mar-April 2025*

### TOTAL: 29 meetings – Nov 2023 to current

During this time:

- o Special Board Meetings – Dec 2024-March 2025 to discuss governance, service, and funding issues.
- o Board resolution on Governance – *March 2025*
- o Board approval of GMP as local solution – *March 2025*
- o Board approval of TIRZ ILA – *May 2025*
- o Transmittal of GMP ILA to 7 cities – *October 2025* (Irving not included based on EY study results)
- o Transmittal of TIRZ ILA to the city forthcoming

Value of Transit

- o July 28, 2022 – Kickoff meeting
- o August 2022 – City Manager interview
- o October 21, 2022 – Review of methodology
- o February 2023 – Discussion of draft findings

Strategic Plan

- o June 7, 2023 – Meeting with Chris Hillman
- o September 20, 2023 – Follow-up meeting with Chris Hillman to discuss strategic vision
- o November 8, 2023 – Second follow-up with City
- o February 20, 2024 – Third meeting with City
- o September 12 – DART presented Strategic Plan to City Council

Area Plan

- o August 9, 2023 – Phase 1 meeting/tour
- o May 20, 2025 – Phase 2 Workshop 1
- o October 7, 2025 – Phase 2 Workshop 2

City Manager group meetings

(Discussed economic development, governance, etc.)

- o September 16, 2024
- o December 9, 2024
- o April 7, 2025
- o May 5, 2025
- o July 11, 2025

NCTCOG RTC Mediation

- o March 4, 2025
- o March 24, 2025
- o March 25, 2025

Meetings with Mayor, City Manager, and DART Board Chair

- o December 2, 2024
- o January 17, 2025

City Council briefing – February 27, 2025

**DART has met with every member city leadership team repeatedly since 2022 to understand their priorities, challenges, and opportunities. Between July 2022 and June 2025, DART met formally with city managers, mayors, and councils more than 130 times.**

