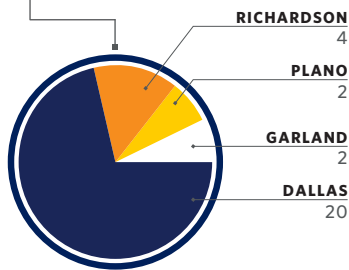
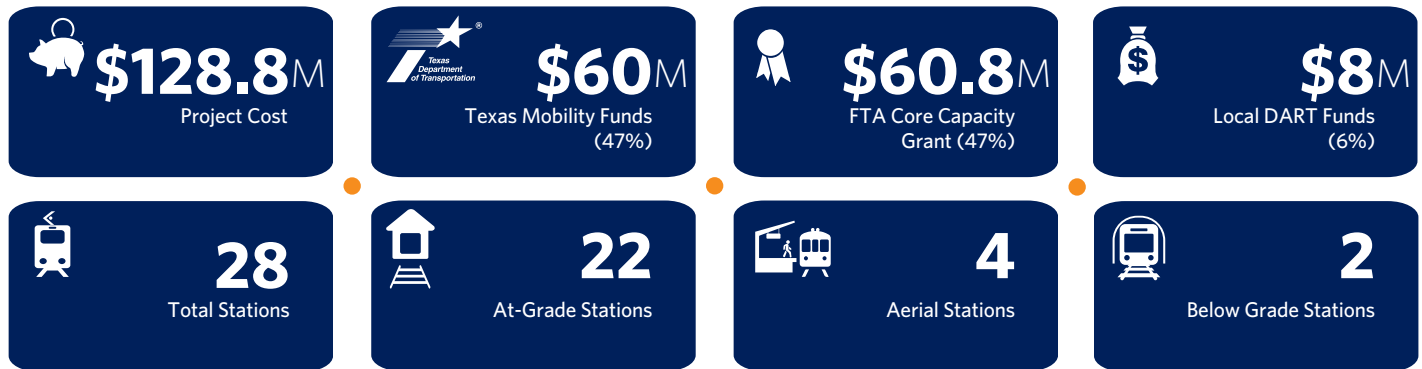


PLATFORM EXTENSIONS

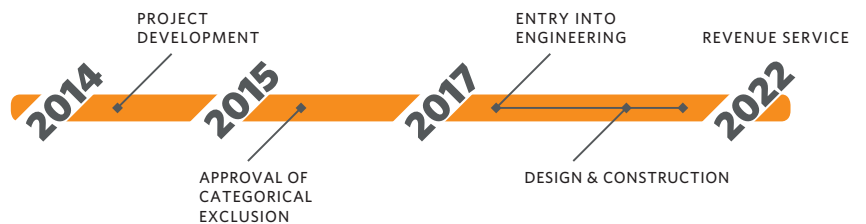
RED & BLUE LINES

PLATFORM EXTENSIONS AT A GLANCE

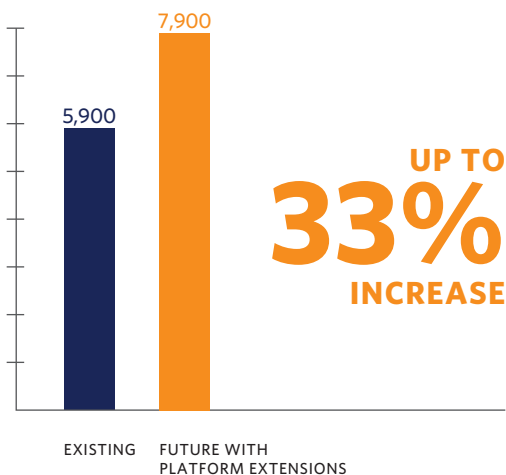


of Stations by Location

PROJECT TIMELINE



PEAK HOUR PASSENGER CAPACITY



PROJECT DESCRIPTION

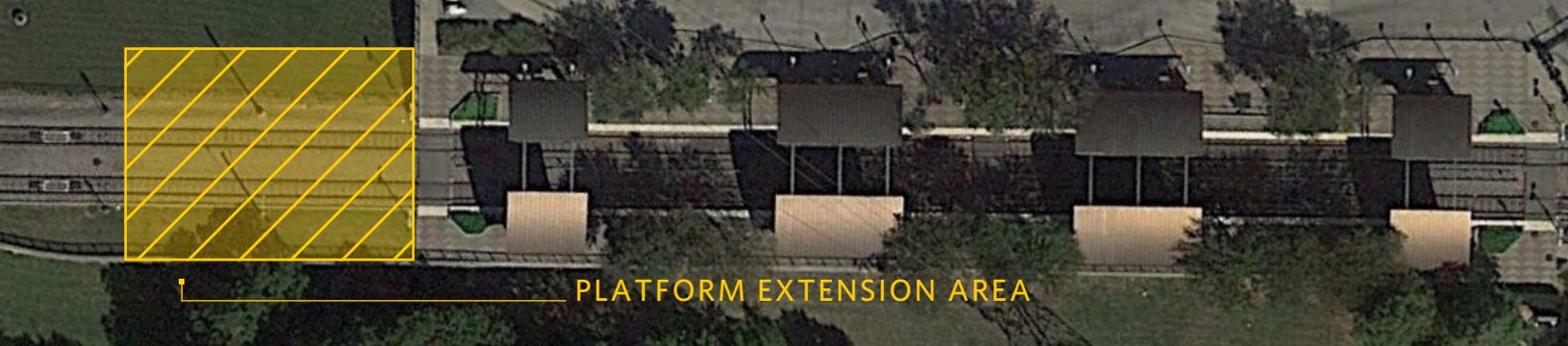
The Dallas Area Rapid Transit (DART) Red and Blue Line Platform Extension project includes modifications to 28 stations constructed prior to 2004. The modifications will enable all or a portion of the platforms to accommodate 3-car Light Rail Vehicle (LRV) consists. Modifications include extending platforms and fully raising 5 of the 28 platforms to permit level boarding. The changes will increase system-wide carrying capacity and enhance the network core capacity. DART is constructing the project with minimal impact to patrons and areas in and around the stations.



DID YOU KNOW?

The initial at-grade platforms on the Red and Blue Lines were constructed as 300-foot platforms. The construction preserved a station envelope for the extensions to account for a future extension to accommodate longer trains.

WWW.DART.ORG



PLATFORM EXTENSION AREA

PLATFORM LOCATION MAP

