



LIVE / WORK / PLAY

- Fair Park
- Eban Village I & II (330)
- Minyards
- Martin Luther King Center
- Martin Luther King Public Library
- Social Security Administration
- Irma Lerma Rangel Young Women's Leadership School
- James Madison High School

STATION ATTRIBUTES

- Rail Service - **Green Line**
- Parking Spaces: 200
- Average Daily Ridership: 1,153
- Peak Service Frequency: 15 minutes
- Travel Time to Downtown Dallas: 12 minutes

AREA DEMOGRAPHICS (1/2 MILE RADIUS)

- Population: 2,545
- Employment: 1,574
- Total Households: 911
- Median Household Income: \$14,275 (2010 Census)



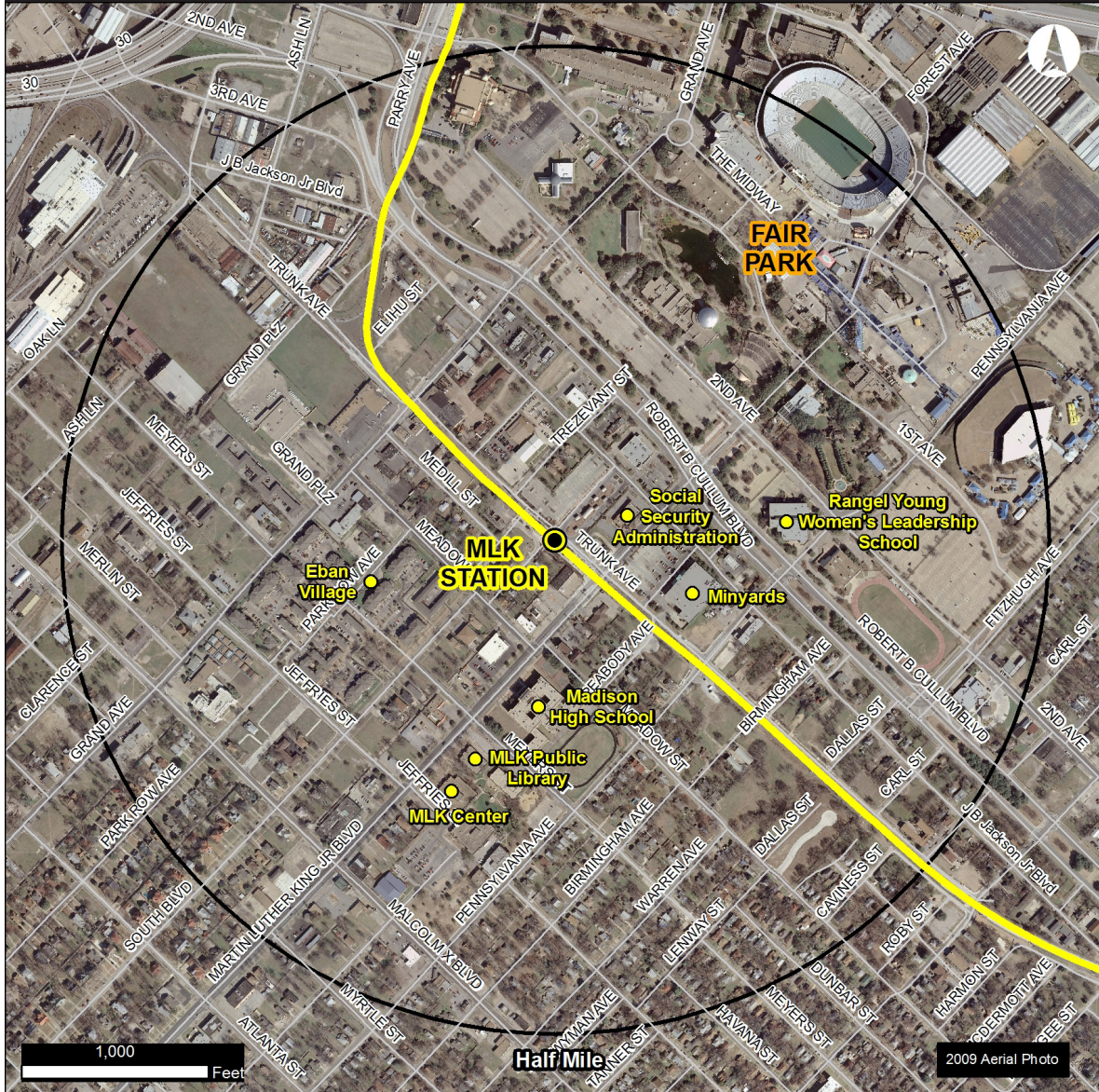
MLK, JR. STATION





STATION AREA

MLK, JR. STATION KEY LANDMARKS

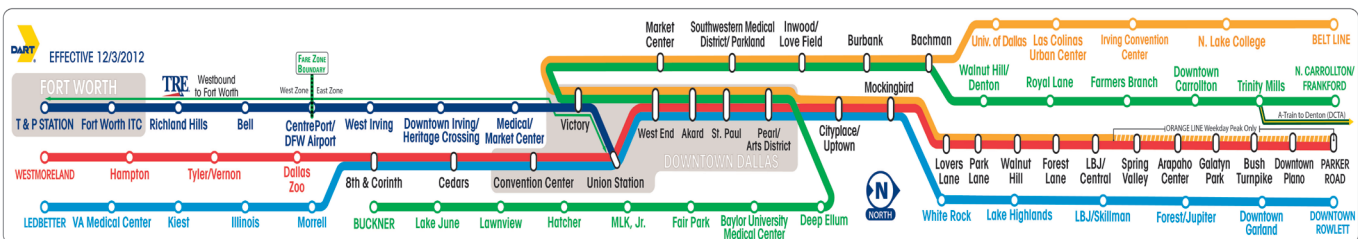


PLANNING AND DEVELOPMENT INFORMATION

DART Economic Development, TOD Guidelines, TOD Policy, and more, www.dart.org/economicdevelopment

City of Dallas Development Services Department, www.dallascityhall.com/

Grand Park South TIF District, <http://www.dallas-ecodev.org/incentives/tifs-pids/grand-park-south-tif/>



REV 6/13

