

# WALNUT HILL/DENTON STATION



## LIVE / WORK / PLAY

- Neighborhood station
- Southwind Apartments (101)
- United Parcel Service (UPS) Distribution Center
- F.P. Caillet Elementary School
- Francisco Medrano Middle School
- Forest Lawn Cemetery

## STATION ATTRIBUTES

- Rail Service - **Green Line**
- Parking Spaces: 269
- Average Daily Ridership: 402
- Peak Service Frequency: 15 minutes
- Travel Time to Downtown Dallas: 16 minutes

## AREA DEMOGRAPHICS (1/2 MILE RADIUS)

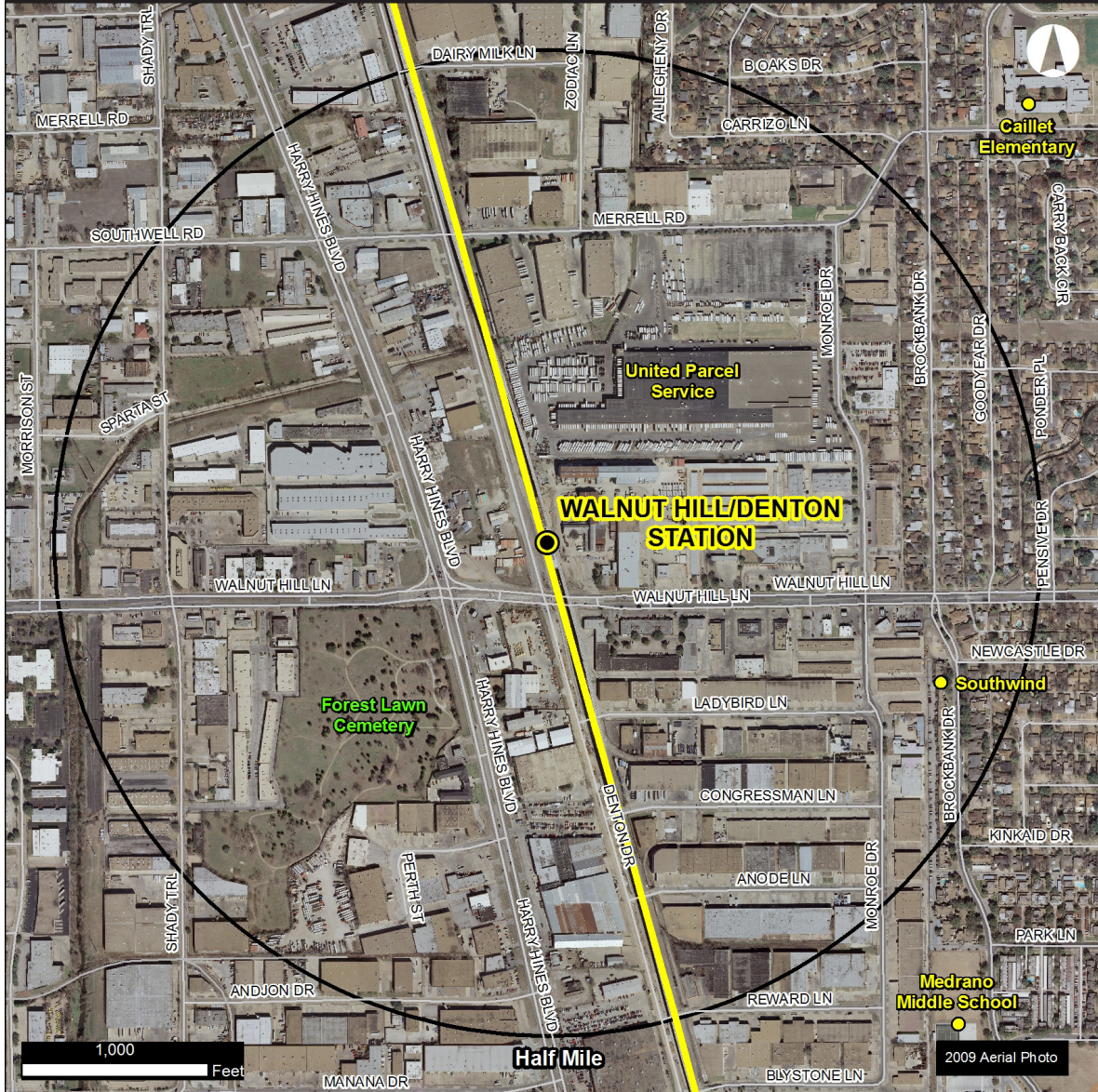
- Population: 1,386
- Employment: 9,748
- Total Households: 487
- Median Household Income: \$38,990 (2010 Census)





# STATION AREA

## WALNUT HILL/DENTON STATION KEY LANDMARKS

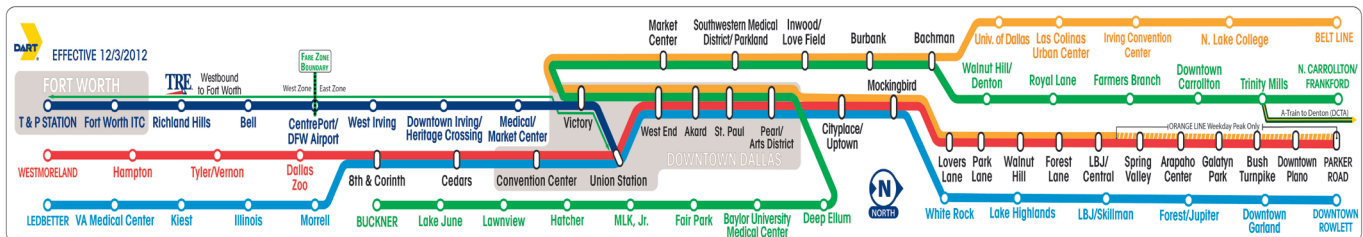


### PLANNING AND DEVELOPMENT INFORMATION

DART Economic Development, TOD Guidelines, TOD Policy, and more, [www.dart.org/economicdevelopment](http://www.dart.org/economicdevelopment)

City of Dallas Development Services Department, [www.dallascityhall.com/](http://www.dallascityhall.com/)

City of Dallas Office of Economic Development, [www.dallas-ecodev.org/](http://www.dallas-ecodev.org/)



REV 6/13

