



LIVE / WORK / PLAY

- Neighborhood station
- J.O. Davis Elementary School
- Towne Lake Park
- West Park

STATION ATTRIBUTES

- Rail Service - TRE
- Parking Spaces: 537
- Average Daily Ridership: 340
- Peak Service Frequency: 20 - 30 minutes
- Travel Time to Downtown Dallas: 25 minutes

AREA DEMOGRAPHICS (1/2 MILE RADIUS)

- Population: 3,193
- Employment: 7,934
- Total Households: 1,144
- Median Household Income: \$42,830 (2010 Census)



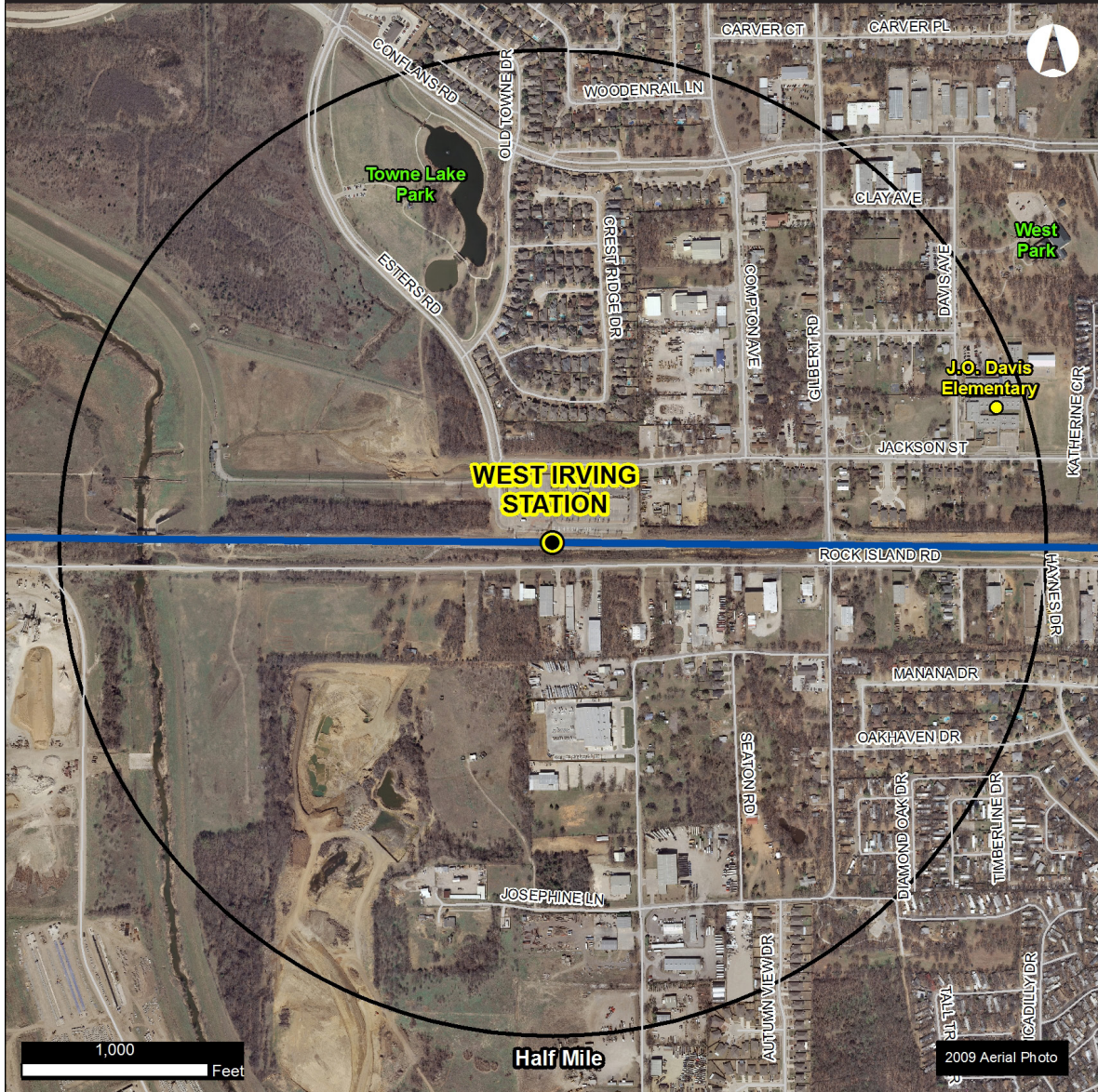
WEST IRVING STATION





STATION AREA

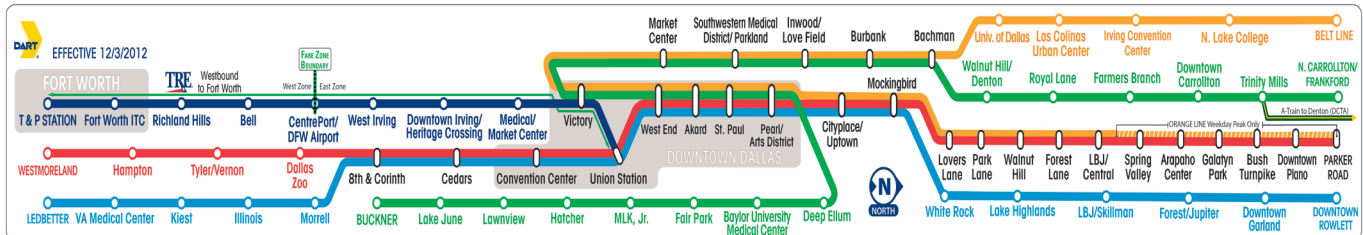
WEST IRVING STATION KEY LANDMARKS



PLANNING AND DEVELOPMENT INFORMATION

DART Economic Development, TOD Guidelines, TOD Policy, and more, www.dart.org/economicdevelopment

Irving Zoning and Development, www.ci.irving.tx.us/planning-and-inspections/zoning.html



REV 6/13

